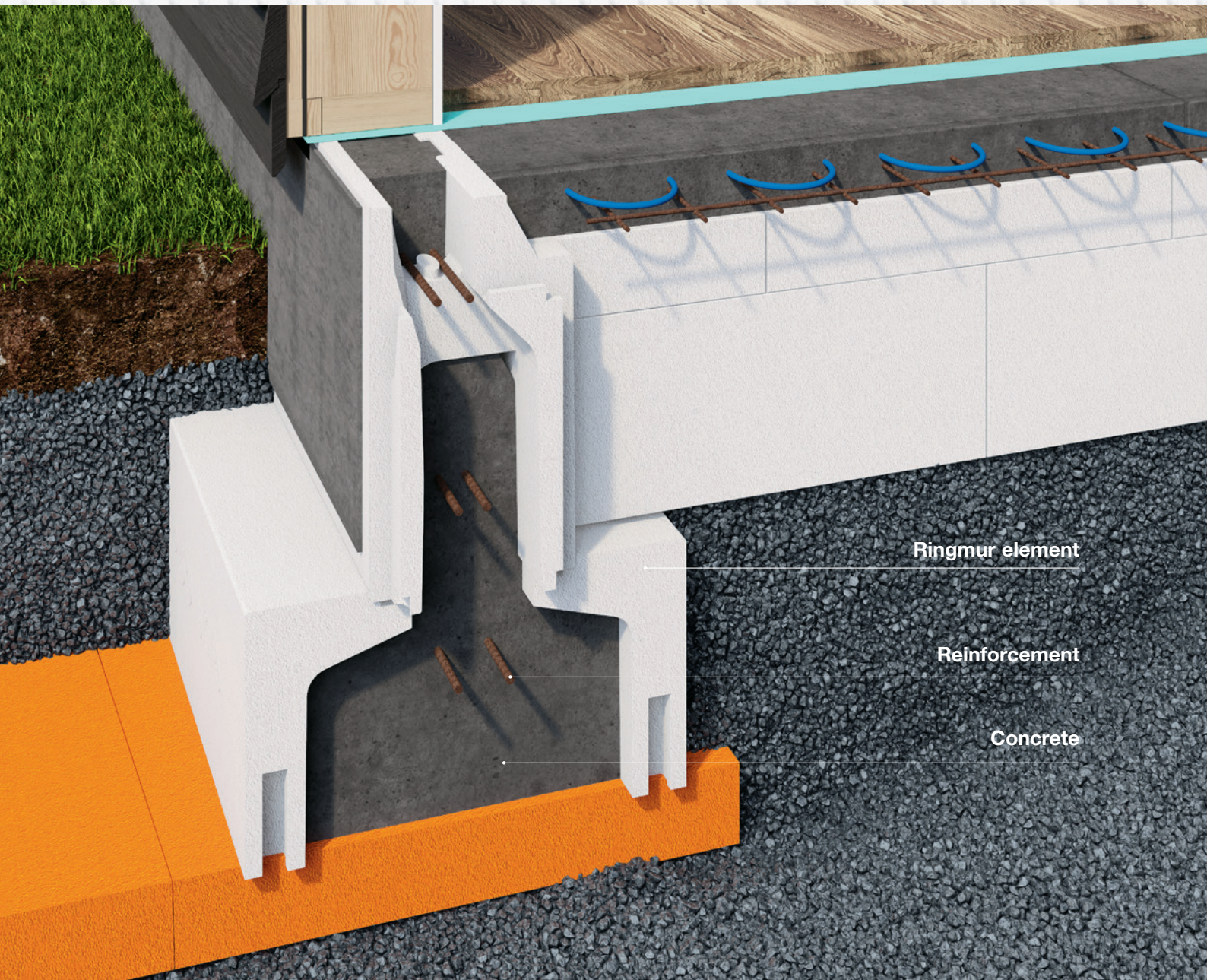




Sundolitt® Ringmur

Assembly Instructions – January 2021



Ringmur element

Reinforcement

Concrete

Delivery

Please make reception control for quantities and quality at arrival. When the goods are put to use they are considered approved.

Security

HSE must be secured at the building site with proper use of security equipment etc. EPS and XPS are flammable materials and they must not be exposed to embers and flames.

TG 2295 describes preapproved areas of use for this product. If you are using the product in other areas there must be made own calculations for this by the responsible consulting engineer. Be aware of areas of use where the top edge of fiber board is exposed to water, then this edge should be covered with a weather shield.

- 1 Put out a 70-80 cm wide gravel layer and compress it. If you are using foundation block, make it 90-100 mm wide.
- 2 Find correct spots for corner elements by using measuring instruments and thread. Put out corner blocks first and put in straight block afterwards. Remember to control heights, angles and straightness. In foundation blocks you put in two bars of reinforcement 12 mm in diameter.
- 3 When the foundation blocks are finished and adjusted you can start with Ringmur blocks. Start with corner blocks first and then the straight elements are assembled in direction counter clockwise. Adjust length on the last straight block at the corner and put in reinforcement with four bars with a diameter of 12 mm, two in the top and two in the lower part of the block. The reinforcement in the top can then be taken out and lies along side the Ringmur ready to put in after the Ringmur is filled with concrete. This will make it easier to fill. Use locking brackets and Sikaflex (or building foam) to ensure tightness and strength of the Ringmur.
- 4 Check heights and straightness again along with diagonal between corners. Then carefully put gravel and masses along the in- and outside to keep it in place when you fill concrete.

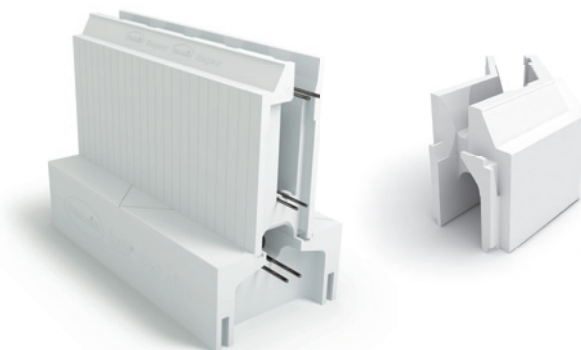
Byggdetalj 521.111 and 521.112 together with TG 2295 is used when planning the project with Ringmur.

Brødr. Sunde as

P.O.Box 8115, Spjelkavik,
NO-6022 Ålesund, Norway
Tel. +47 70 17 70 00
e-mail: norway@sundolitt.com
www.sundolitt.com

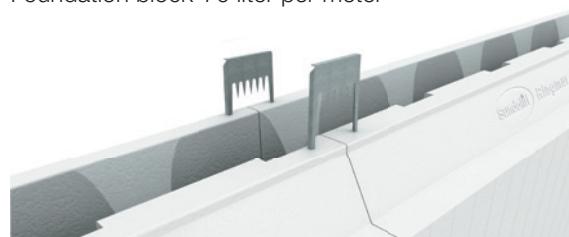
Ordremottak: ☎ +47 70 17 70 00

E-mail: ordre.norge@sundolitt.com



Concrete quantity:

Ringmur RE35	35 liter per meter
Ringmur RE45	50 liter per meter
Ringmur RE60	70 liter per meter
Foundation block	70 liter per meter



- 5 Fill concrete in the blocks by walk around two rounds. If you also have foundation block three times is needed. Use reduced speed on concrete pump and do not use vibrator. Put the top reinforcement in at the end and make a smooth surface on concrete. Concrete prescription is B30 with D-max 16 mm, 25 % reduced content of gravel, slump test level 16-18 cm.
- 6 Let the concrete harden for 7 days before work is continued on top of it. Put in masses, floor insulation, radon membrane and reinforcement for concrete floor.
- 7 In general, take precautions to prevent EPS blocks from floating up during concrete filling. Load on top, building foam between Ringmur and foundation block, or locking brackets can be used. Remember to wipe of concrete that is spilled on blocks.

